

PRODUCT INFORMATION

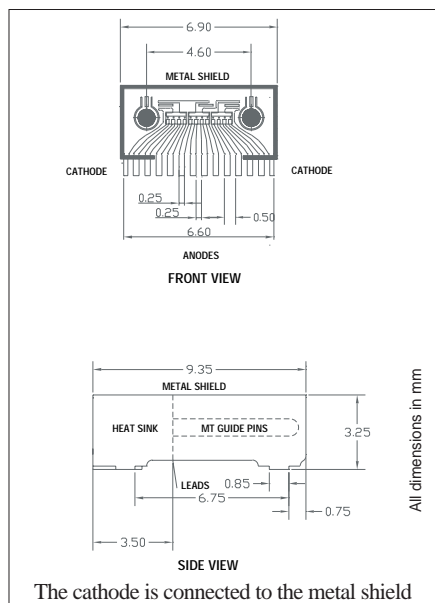
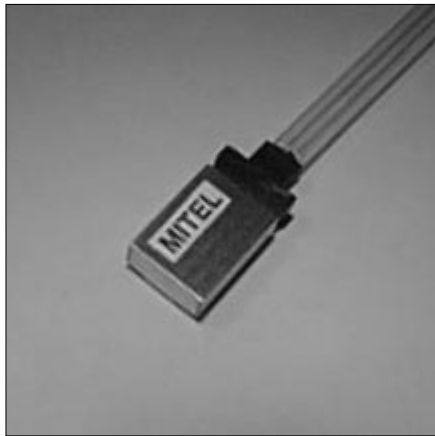
840nm

12L486
PIN Array

Parallel Datacom, Telecom

ADVANCE/Q

This device consists of a 12-channel PIN Photodiode array in a miniature surface-mountable MT package. It is based on a unique combination of self-alignment technology and direct optical coupling to fiber, resulting in optimum coupling efficiency without need for active alignment. Applications include parallel Fibre Channel and optical interconnect inter/intra-board. And it matches the 12L485 VCSEL Array.



PIN Array in MT Package

Optical and Electrical Characteristics (25° C Case Temperature)

PARAMETER	SYMBOL	MIN.	TYP.	MAX.	UNIT	TEST CONDITION
Responsivity	R		0.45		A/W	$\lambda=850\text{nm}$
Bandwidth (3dB _{el})	f_c		2		GHz	$R_L=50\Omega$
Capacitance	C		1		pF	$f=1\text{MHz}$
Dark Current	I_d		0.4		nA	
Crosstalk	X		-30		dB _{el}	$\lambda=850\text{nm}$ (Note 1)

Test Condition: $V_P=3.3\text{V}$ or 5V . Fiber Ribbon: 50/125 GI, NA=0.2 or 62.5/125 GI, NA=0.275.

Note 1: Crosstalk between adjacent channels operating at 2GHz.

Absolute Maximum Ratings

PARAMETER	SYMBOL	LIMIT
Storage Temperature	T_{stg}	-40 to +85°C
Operating Temperature	T_{op}	0 to +70°C
Reverse Voltage	V_R	20V
Soldering Temperature (2mm from the case for 10 sec)	T_{sld}	260°C

Thermal Characteristics

PARAMETER	SYMBOL	MIN.	TYP.	MAX.	UNIT
Temperature Coefficient - Dark Current	dI_d/dT_j		5		%/°C

13727.11 1999-01-13



Europe: Tel (46) 8 58 02 45 00 Fax (46) 8 58 02 01 10
Tel (44) 1291 436180 Fax (44) 1291 436771

America: Tel 1-800-96MITEL Fax (613) 592-6909
Asia: Tel (65) 293 5312 Fax (65) 293 8527